

PHILIPS

Ultrasound

Lumify

Philips Lumify – ultrasound on your
Android device. **Ready when you are.**

The print quality of this copy is not an accurate representation of the original.



An exciting breakthrough in **point-of-care** imaging technology.

Lumify is the app-based mobile ultrasound system that brings Philips-quality imaging to your compatible smart device.

Bring the technology directly to your patients when it's needed, for faster diagnosis and treatment.

Our subscription model makes it easy to get started. With three simple steps you're ready to go.

-  **Download**
the Lumify app to your smart device.*
-  **Connect**
the Lumify transducer to your compatible smart device.
-  **Scan**
with the exceptional quality of Philips imaging technology.

* See Lumify portal for the list of compatible smart device options: www.philips.com/lumify-compatible-devices

The print quality of this copy is not an accurate representation of the original.





Lumify combines all the advantages of Philips innovation to bring you truly mobile ultrasound capability.

Download the app, connect, scan, and share images from your compatible smart device or phone.

Our transducers and mobile app incorporate decades of expertise and innovation in ultrasound imaging to help you make informed decisions.



Lumify C5-2 broadband curved array transducer

Lumify L12-4 broadband linear array transducer

Lumify S4-1 broadband phased array transducer

Quality imaging

Our S4-1, L12-4, and C5-2 transducers deliver exceptional image quality and reliable performance.

High-quality ultrasound imaging is now available on your compatible smart device with Lumify, the mobile app and hardware solution from Philips. Lumify's newest transducer, the S4-1, has presets for cardiac, abdominal with lung, Ob/Gyn, and FAST exams. Our L12-4 transducer supports a variety of clinical applications, including soft tissue, musculoskeletal, lung, and vascular scanning. The C5-2 offers abdominal with lung and gallbladder presets, and Ob/Gyn capabilities.

Simple connectivity

Lumify makes it easy to share information and collaborate with colleagues and specialists.

Philips Lumify mobile ultrasound gives you the power to quickly send and share images, notes, and diagnostic data via email, DICOM to PACS, a shared network, or a local directory. It's a dependable and comprehensive point-of-care solution that brings simplicity, mobility, and flexibility to ultrasound technology.

Flexible pricing

Subscription and purchase options make it easy and quick to get started.

Experience the quality, flexibility, and mobility of Philips Lumify when you purchase at a one-time cost or subscribe monthly, yearly or biennially (subscription includes a 30-day deferred payment). When you purchase or subscribe, you'll receive:

- A Philips Lumify transducer
- Lumify ultrasound app
- Ongoing software upgrades
- Manufacturer's warranty on the hardware
- Access to Philips service and education

The print quality of this copy is not an accurate representation of the original.



Just plug the transducer into the USB port of your compatible smart device and you're ready to begin scanning.

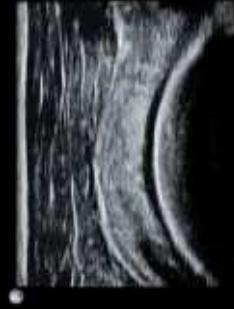
Lumify brings three decades of **imaging expertise** and innovation to point-of-care practitioners.



Philips Lumify offers quality imaging and flexibility with three transducers:

- C5-2 broadband curved array
- L12-4 broadband linear array
- S4-1 broadband phased array

For more information about the flexibility, simplicity, and quality of Lumify ultrasound, visit Philips.com/lumify or call **1-844-MYLUMIFY**.



Rotator cuff/shoulder



Carotid



Gallbladder



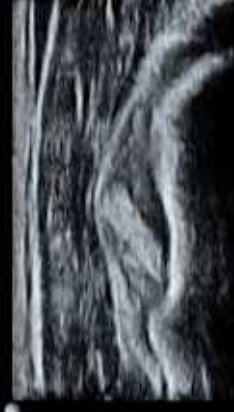
Inferior vena cava



Carotid artery and jugular vein



Kidney cyst



Biceps tendon



Left ventricle short-axis

©2016 Koninklijke Philips N.V. All rights are reserved. Philips reserves the right to make changes in specifications and/or to discontinue any product at any time without notice or obligation and will not be liable for any consequences resulting from the use of this publication. Trademarks are the property of Koninklijke Philips N.V. or their respective owners.



www.philips.com/lumify
Printed in The Netherlands.
4522 991 22131 * OCT 2016

The print quality of this copy is not an accurate representation of the original.