



Shanghai United Imaging Healthcare Co., Ltd.

UCT 530

Computed
Tomography System.

uCT 530

Integrated with cutting-edge technologies, uCT 530 greatly enhances routine clinical performance of CT with advances in both image quality and workflow efficiency.

Core Technology

- Innovative Z-Detector

Product Highlights

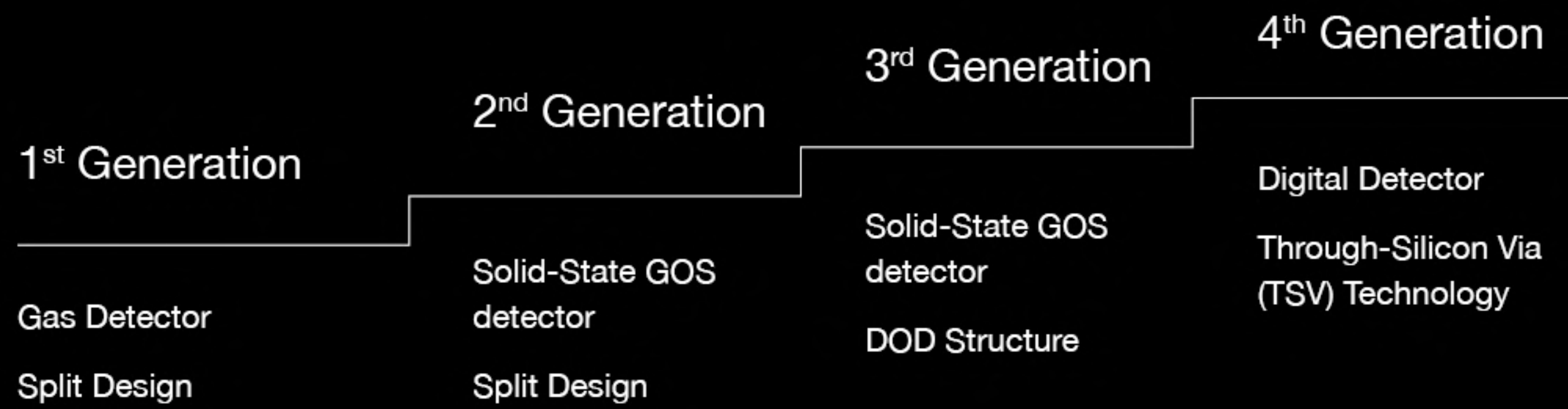
- Powerful Imaging Chain
- Exquisite Images
- Efficient Workflow



Core Technology

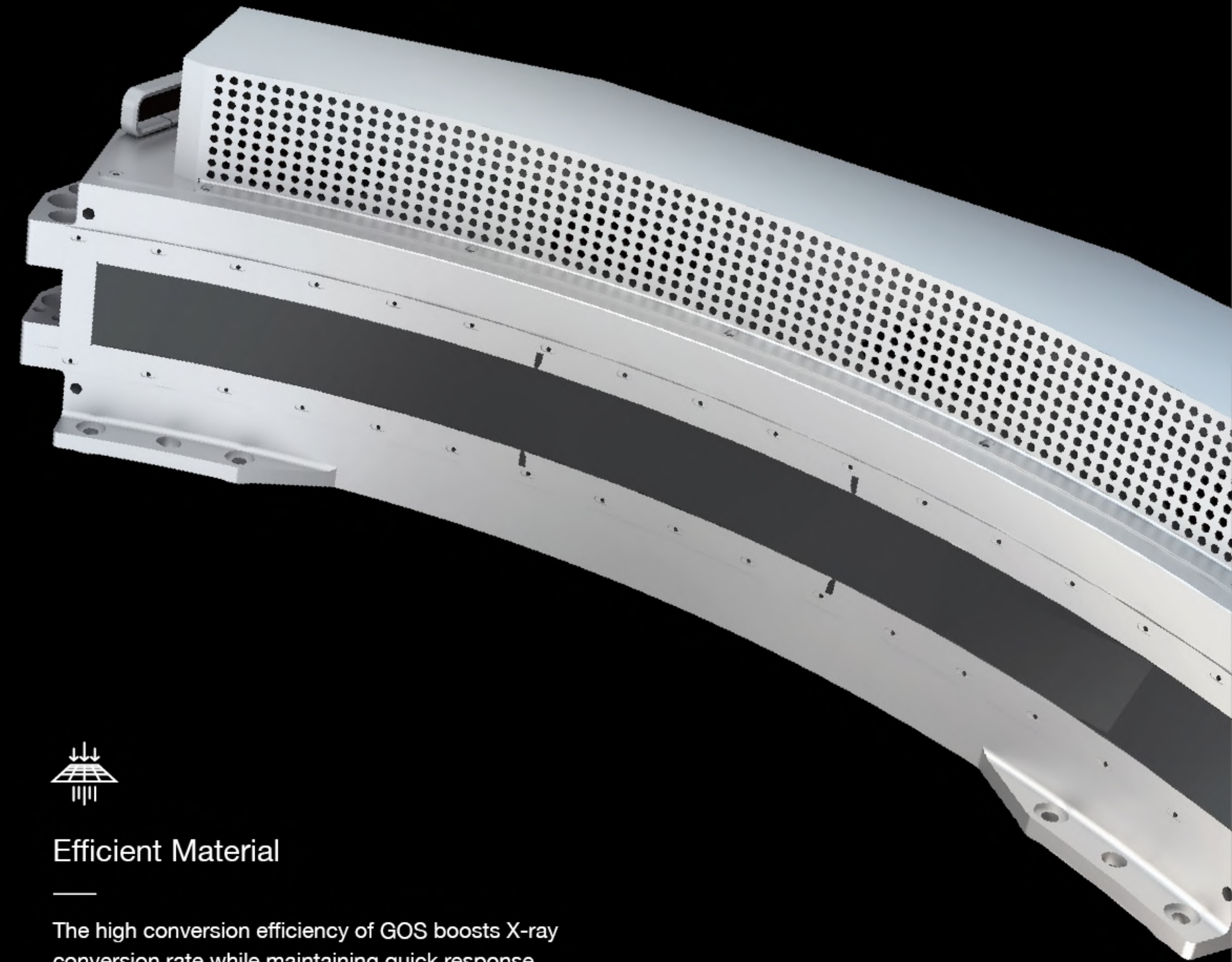
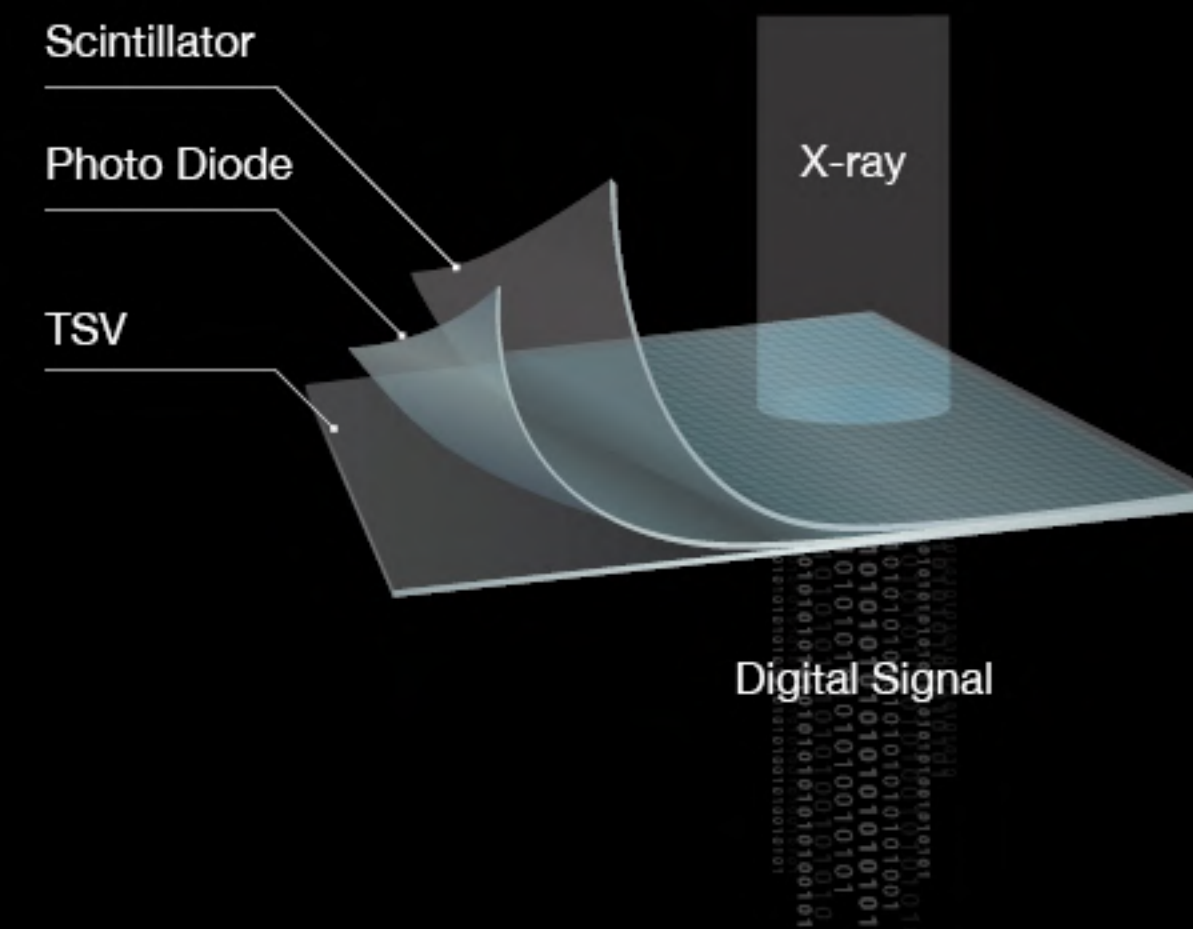
Innovative Z-Detector

The ultra-low noise detector fundamentally improves the image quality.



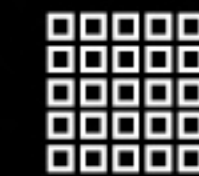
Ultra-low Noise Design

With Through-Silicon-Via (TSV), Z-Detector enables direct output of digital signal, which achieves not only overall noise reduction, but also helps to ensure optimal image quality with low radiation dose.



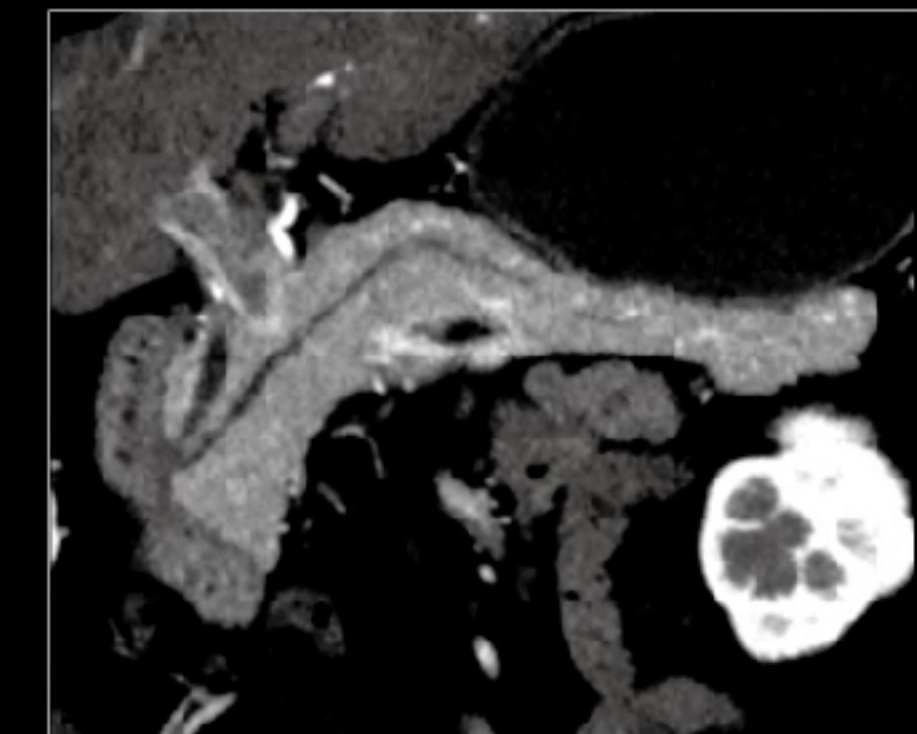
Efficient Material

The high conversion efficiency of GOS boosts X-ray conversion rate while maintaining quick response time.



Fine Sampling

The very fine sampling voxels acquire massive amount of information, bringing exquisite visualization of fine anatomic details.



Clear pancreatic duct and pancreas boundary.

Product Highlights

Powerful Imaging Chain

Based on the high-performance imaging chain from UIH's 160-slice CT system, uCT 530 enables comprehensive and advanced clinical applications, assists precise clinical diagnosis and helps establish and expand your CT business efficiently.

5.3_{MHU}

Large heat-capacity tube helps to ensure high-throughput scanning.

40_{Row Z-detector}

With 22mm z-axis coverage and 0.55mm slice thickness, uCT 530 offers extraordinary spatial resolution and low contrast detectability.

50_{kW}

High HV power generator helps to guarantee uninterrupted flow of power.

70_{kV}

The low kV scan mode allows lung cancer screening at sub-mSv dose level and CT angiography with less contrast agent and flow rate.



Product Highlights

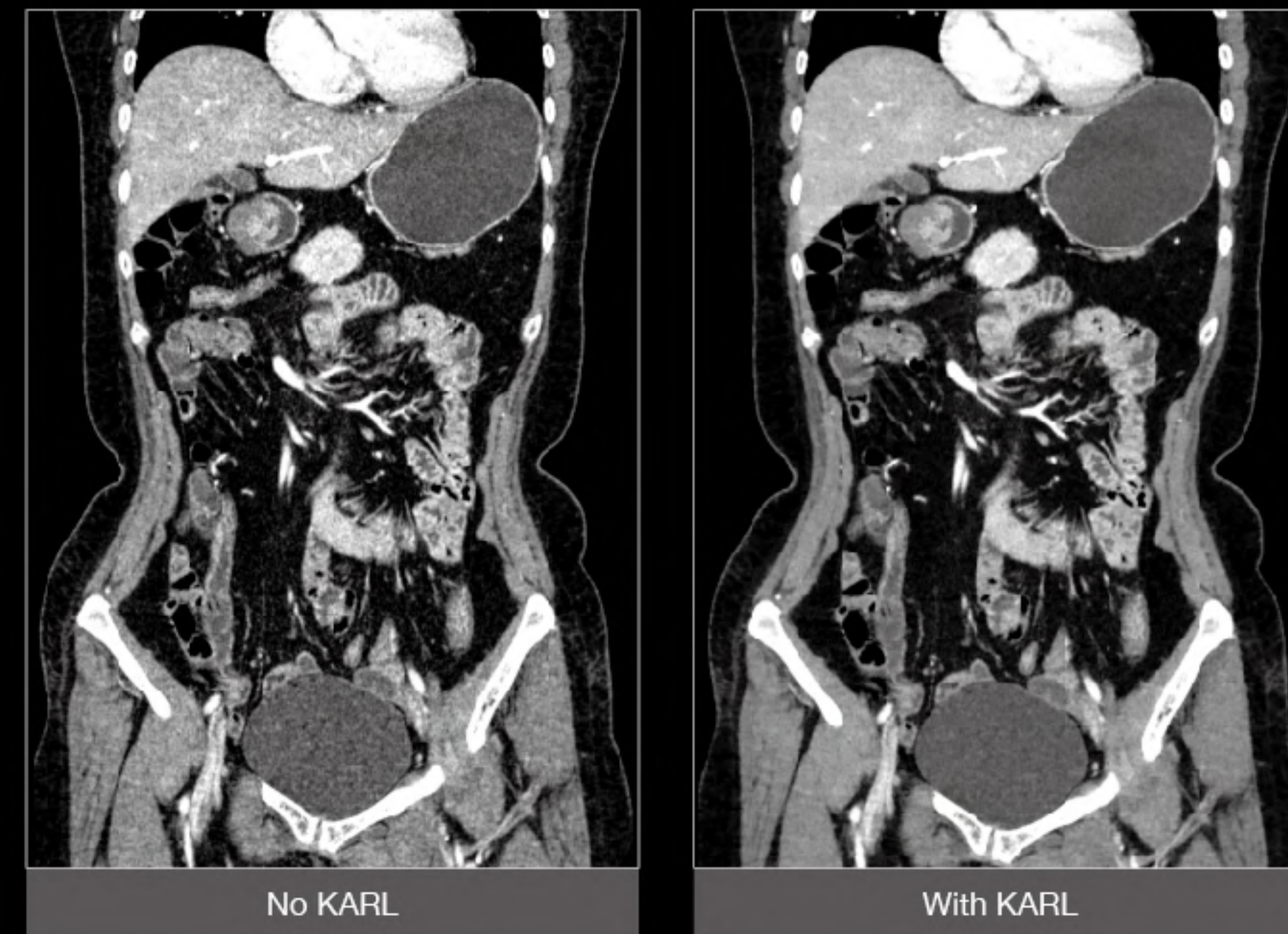
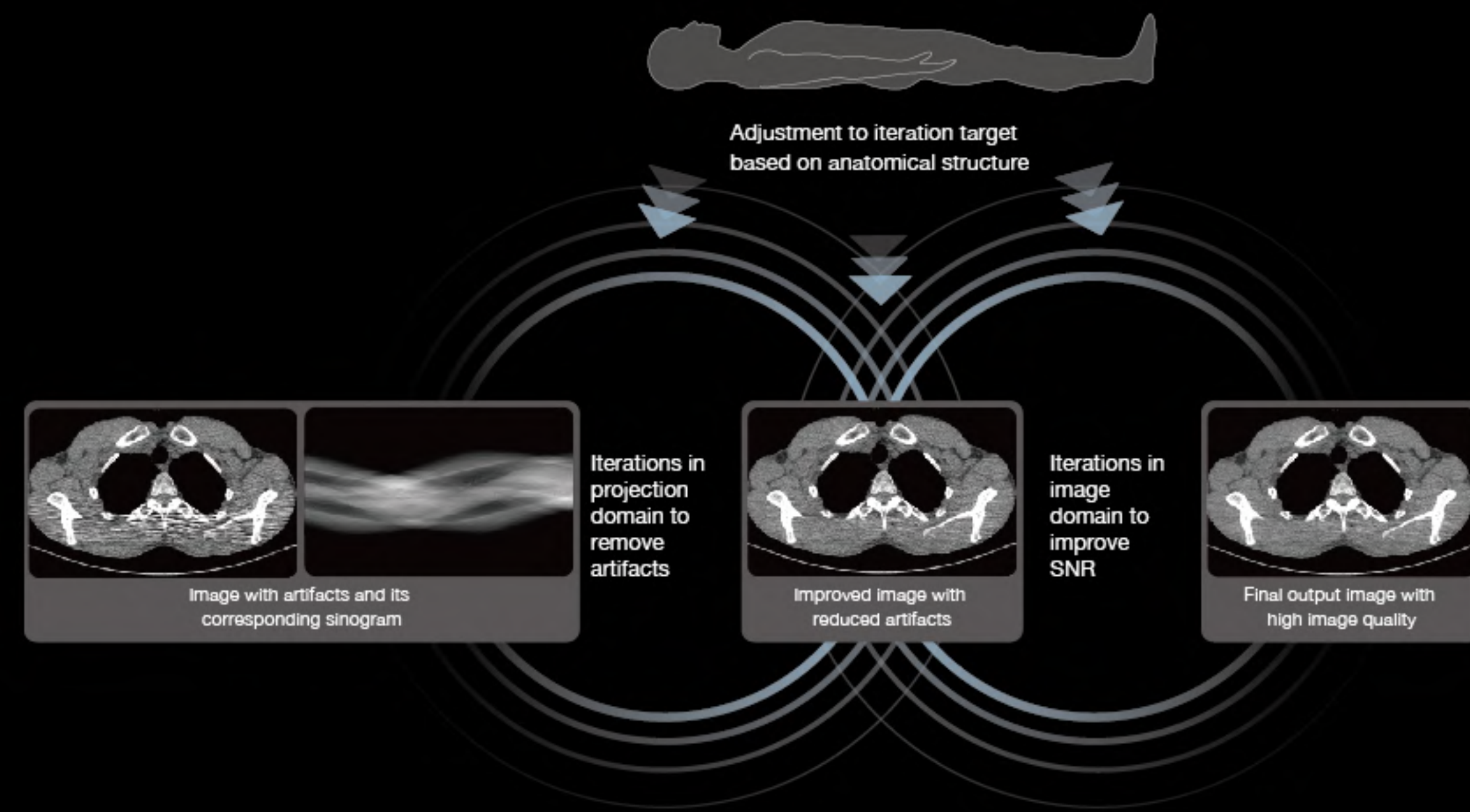
Exquisite Images

Combining Z-Detector, the powerful imaging chain and the advanced software platform, uCT 530 enables high resolution images with low radiation dose, and facilitates reliable and versatile clinical experiences.



KARL 3D Iterative Denoising*

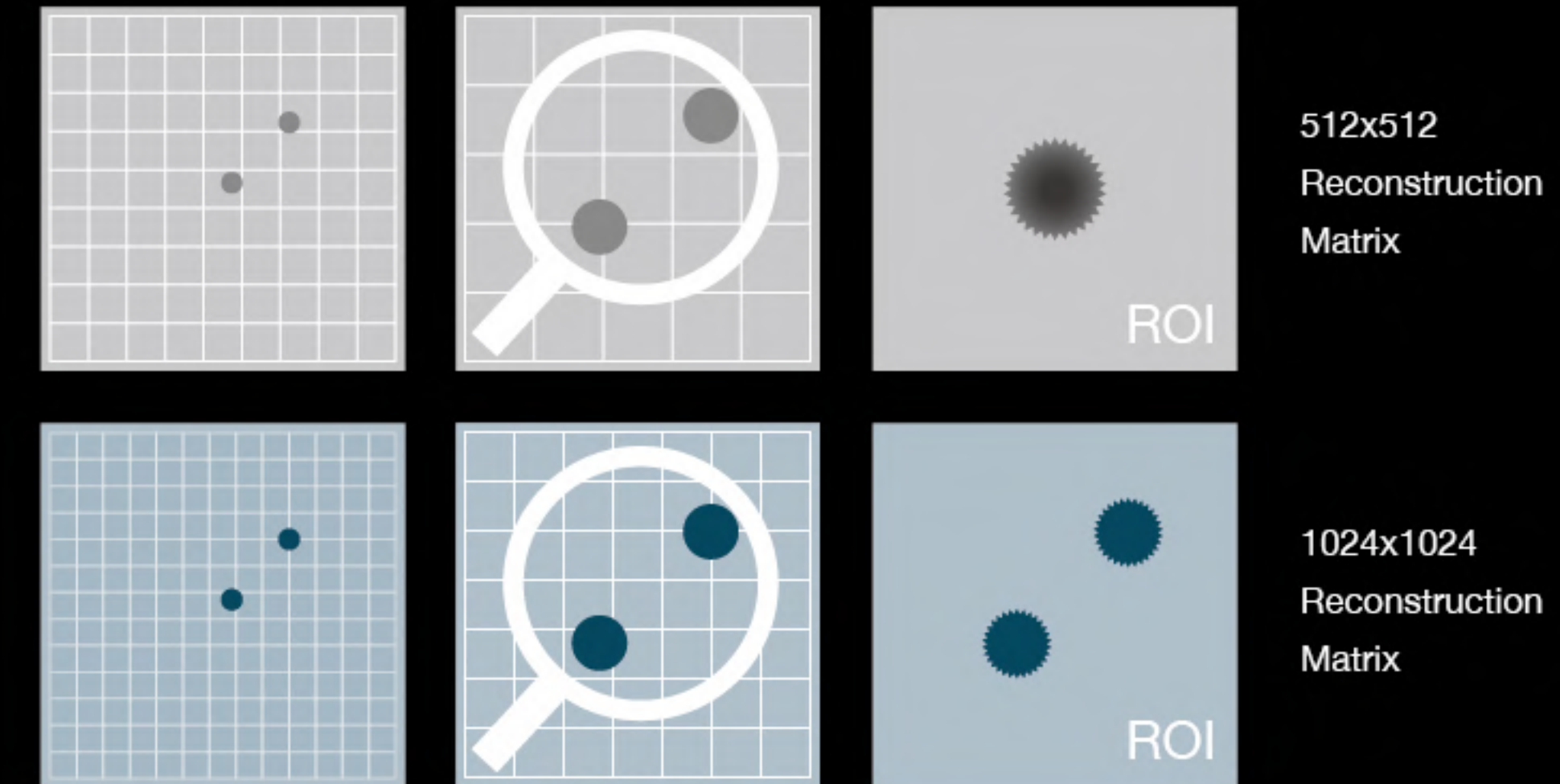
KARL 3D employs iterative algorithm in both projection space and image space. It helps deliver image with outstanding quality while reducing image noise.



100kV, 188mAs, CTDIvol: 9.21mGy.

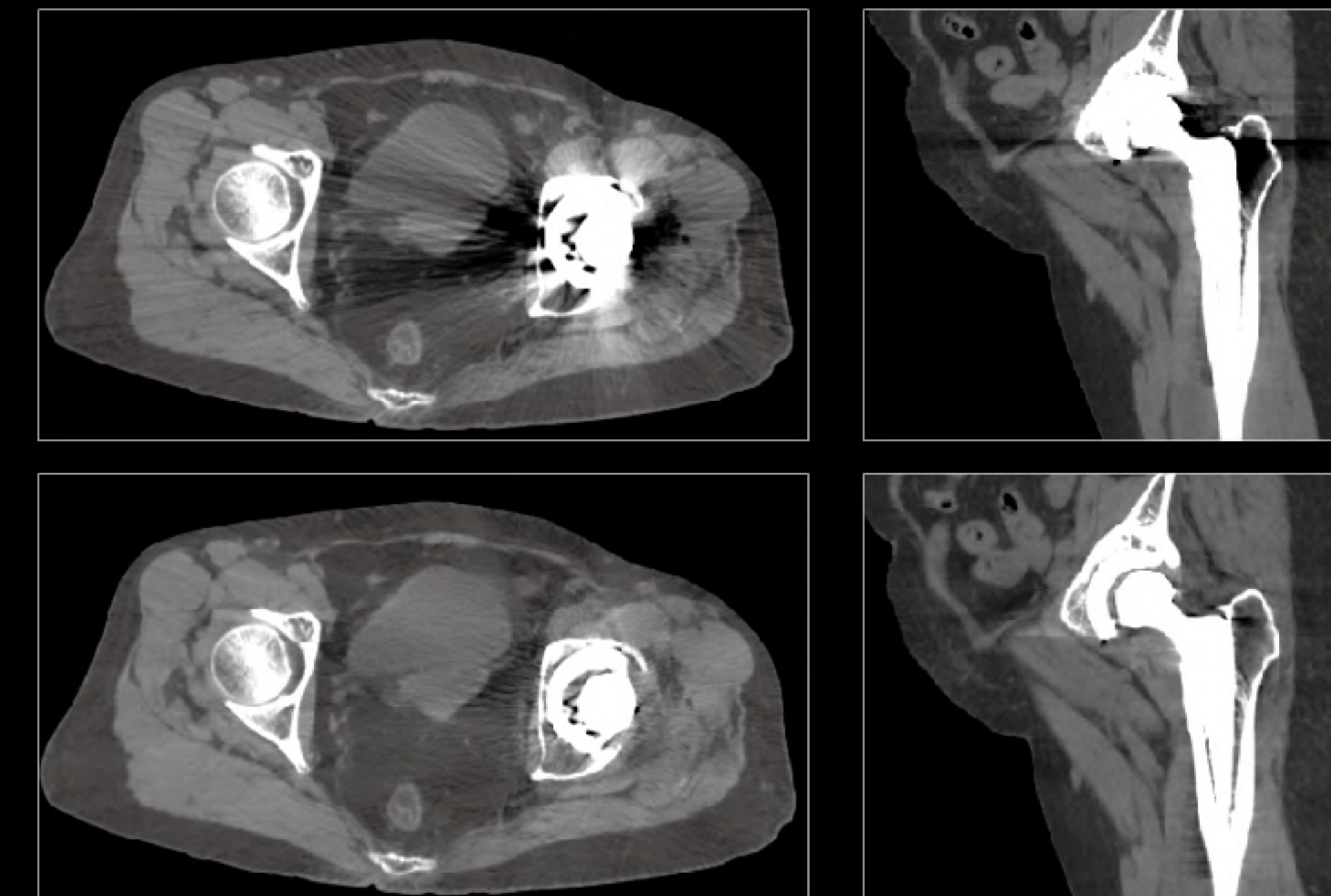
1024x1024 HD Reconstruction Matrix*

The high-definition reconstruction matrix reveals the fine details of inner ear, small joints and lung structures, etc.



MAC Metal Artifact Correction*

MAC reduces metal artifact when imaging patients with metal implants.



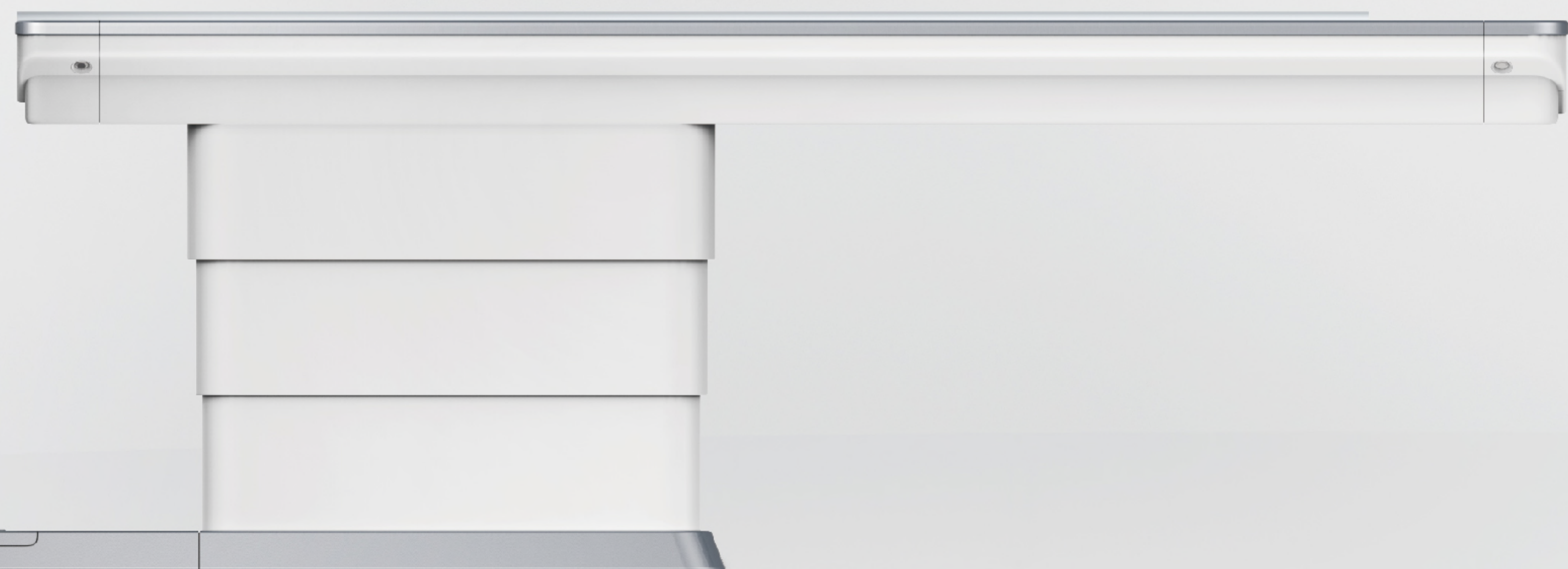
Effectively reduces metal artifacts induced by the hip joint implant and allows clear visualization of surrounding soft tissue and bone structure.



Product Highlights

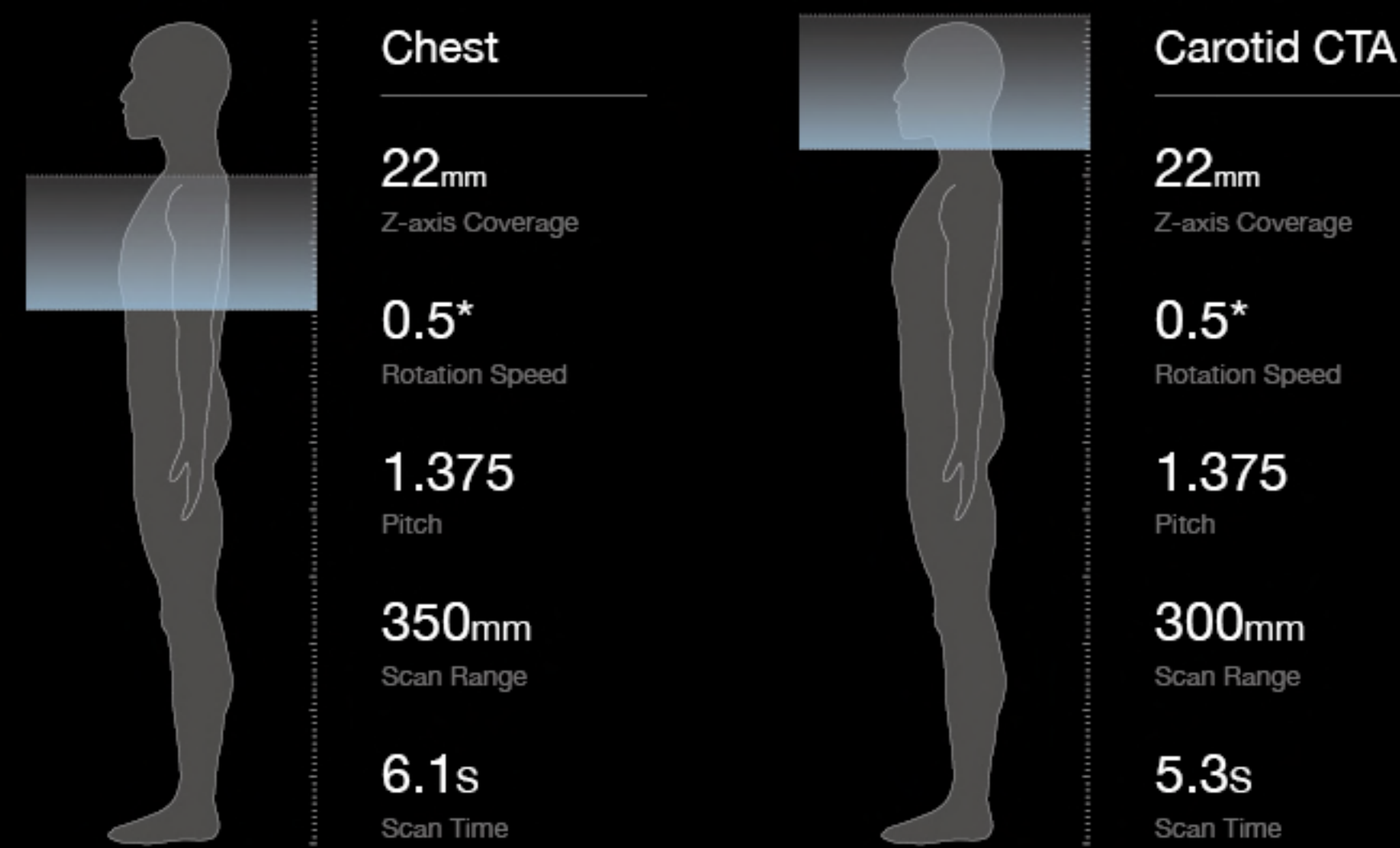
Efficient Workflow

With innovative low-consumption design and the Easy-Logic Intelligent prediction platform, uCT 530 helps to ensure high efficiency in operation, prevent unnecessary wear and tear, and boost daily patient throughput capability.



Reliable Hardware Platform

The large heat-capacity tube with 815kHU/min heat dissipation capability promotes fast workflow; 22mm z-axis coverage detector and 0.5s* rotation speed shorten the scan time.



Easy-Logic Intelligent Prediction Platform

The system predicts the next user operation and gets ready prior to the command conducted, including tube, gantry and data-preprocessing. uCT 530 helps to ensure a seamless and streamlined workflow.

uECO Energy-Saving Module

The uECO energy-saving module reduces power consumption of the CT and puts less burden on the environment without compromising on system performance.



Diagnosis Assistant Tool

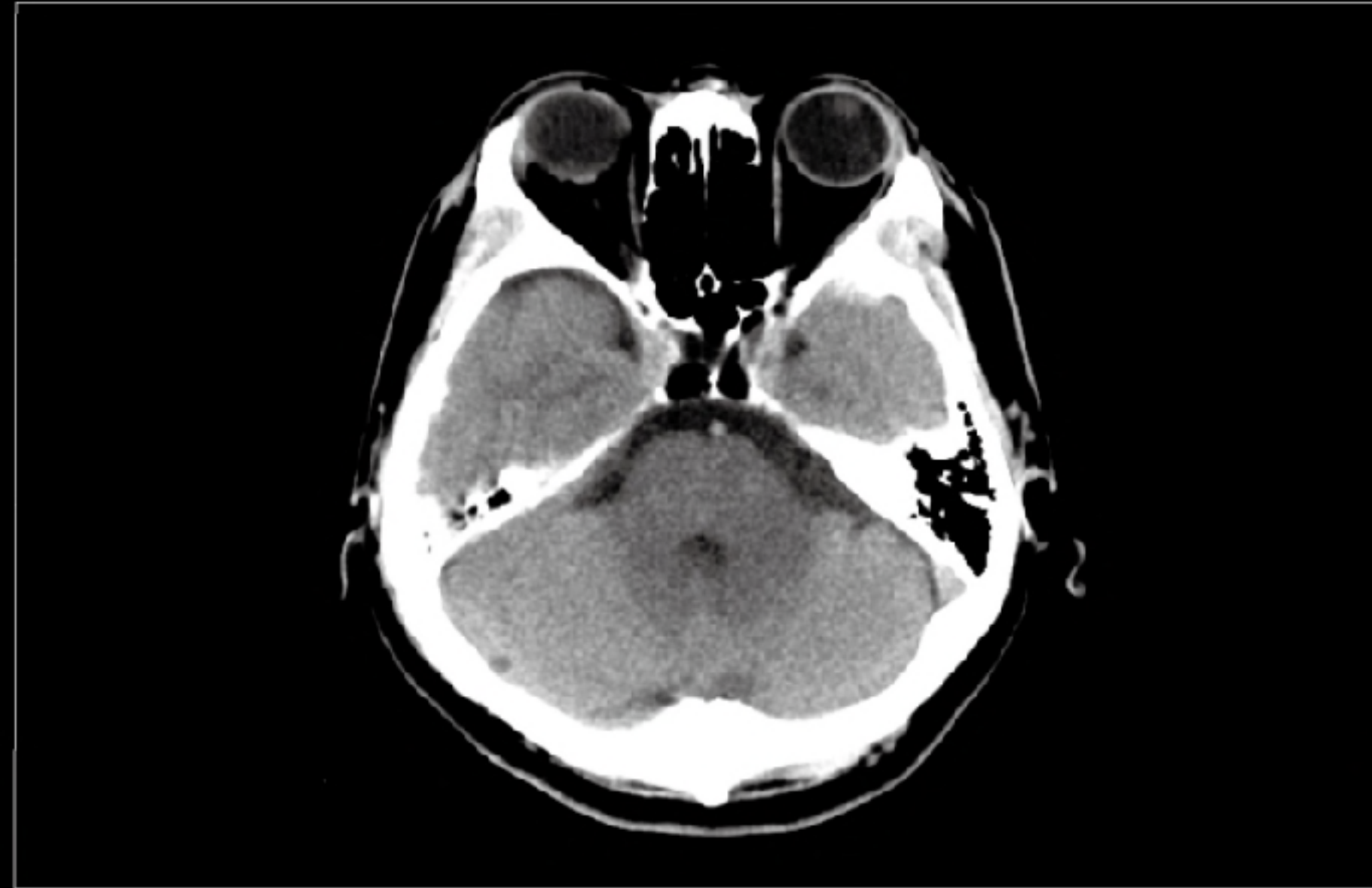
Multiple advanced post-processing applications, e.g. lung nodule analysis*, lung density analysis*, vessels analysis*, raise diagnostic confidence.

The intelligent bone removal applies different analytical algorithms dedicated to different types of study respectively, e.g. head & neck, body, extremities and urinary system.

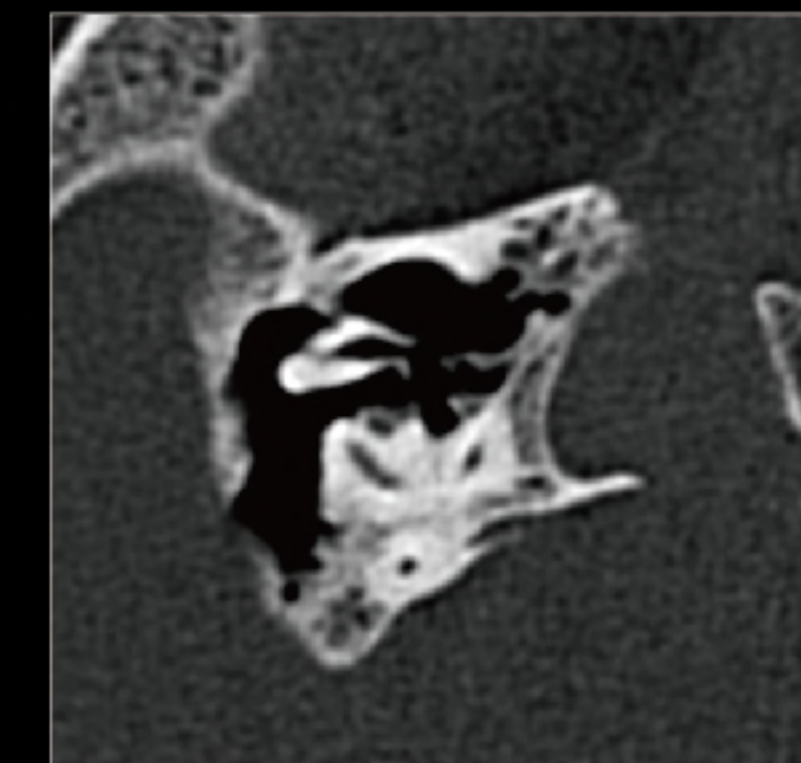
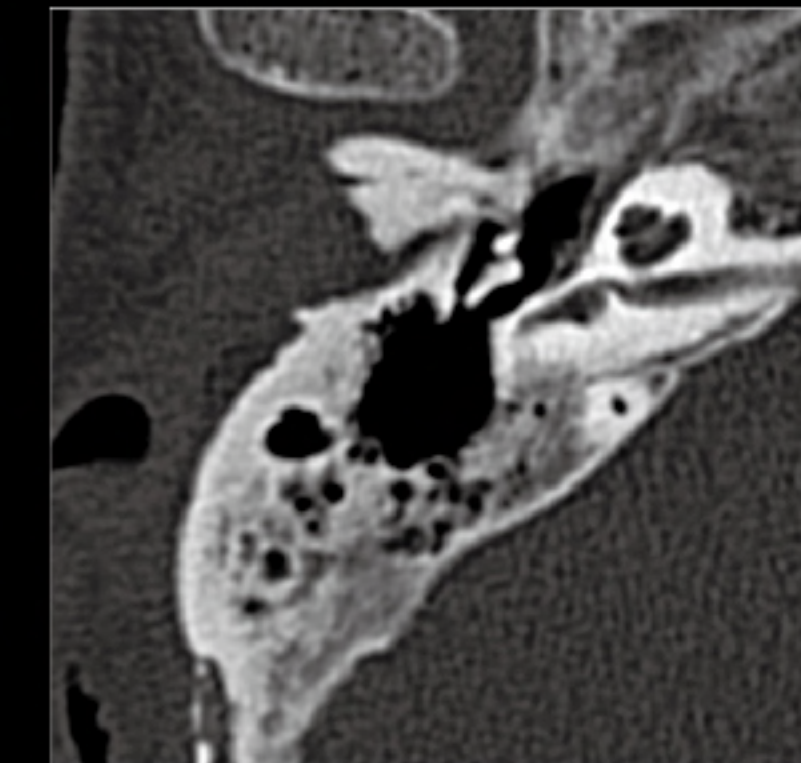
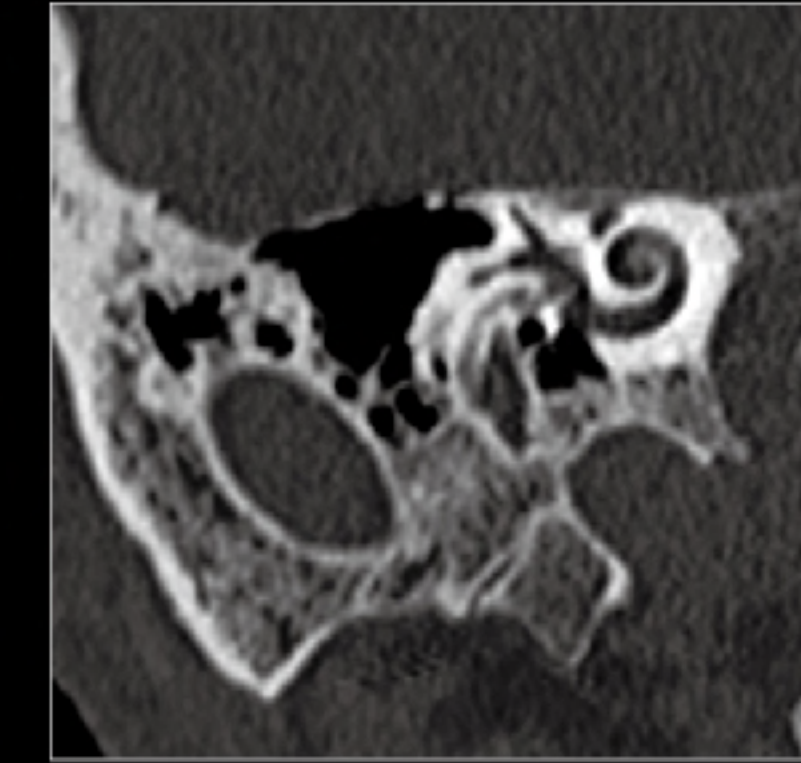
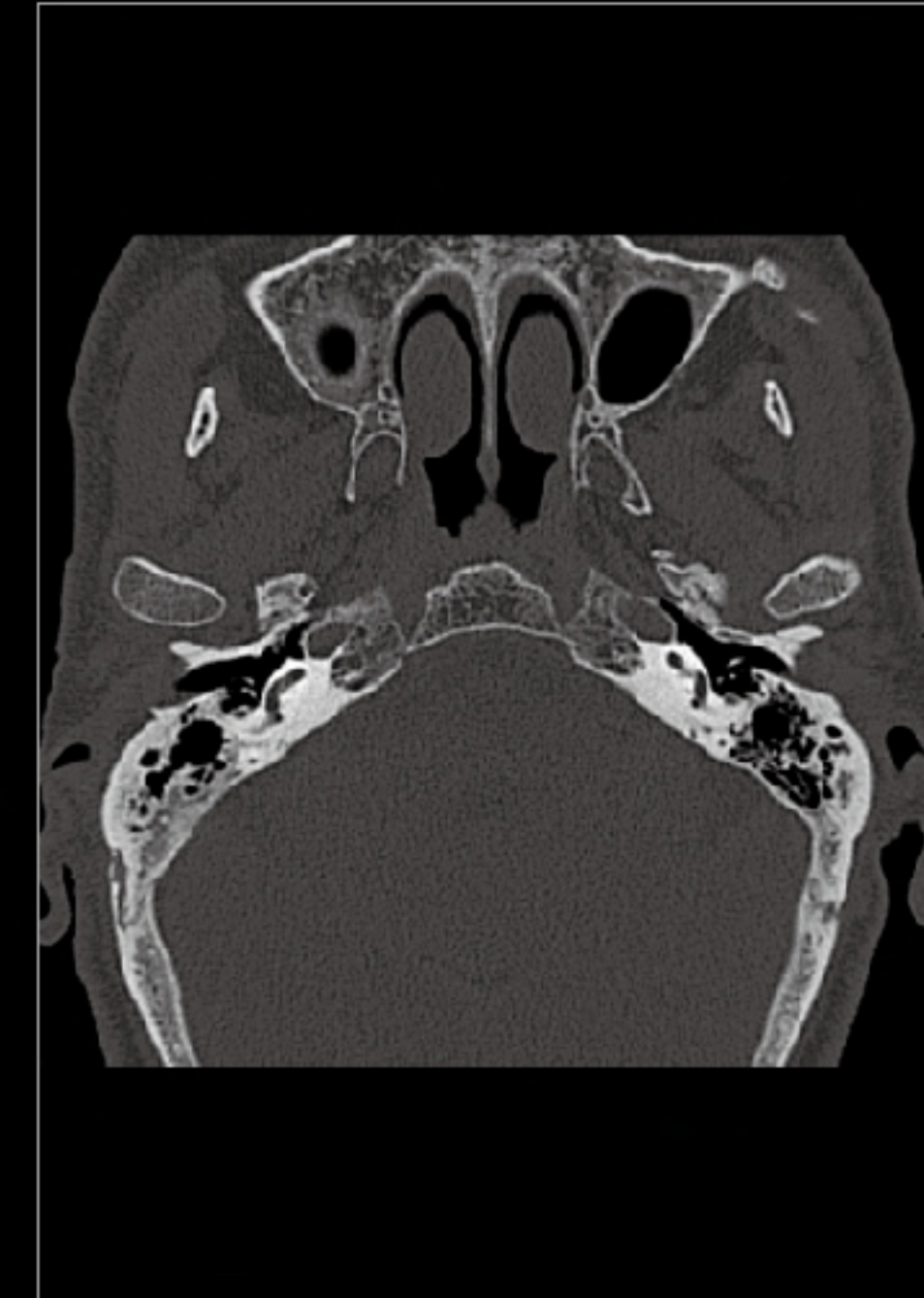


* Optional

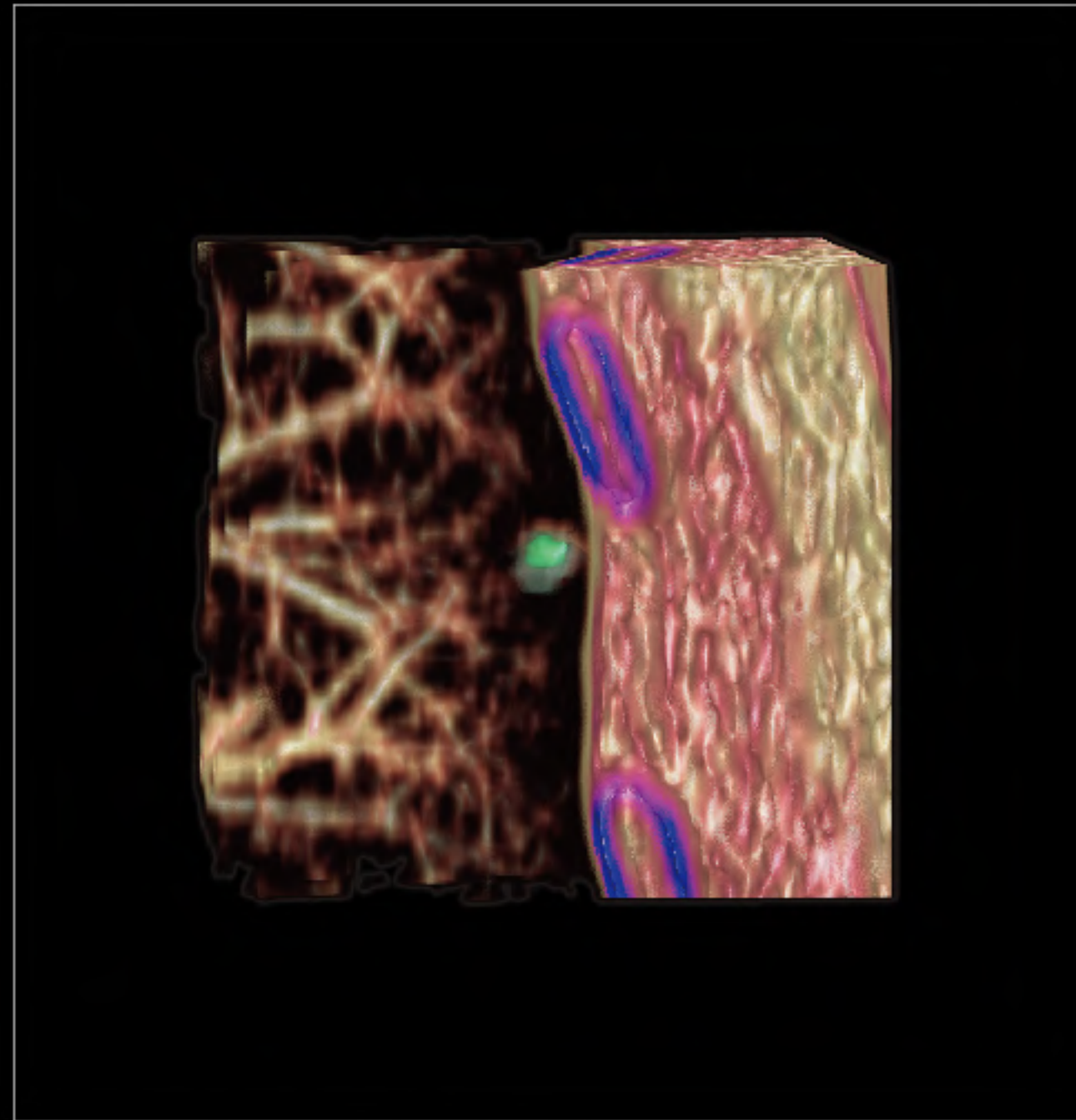
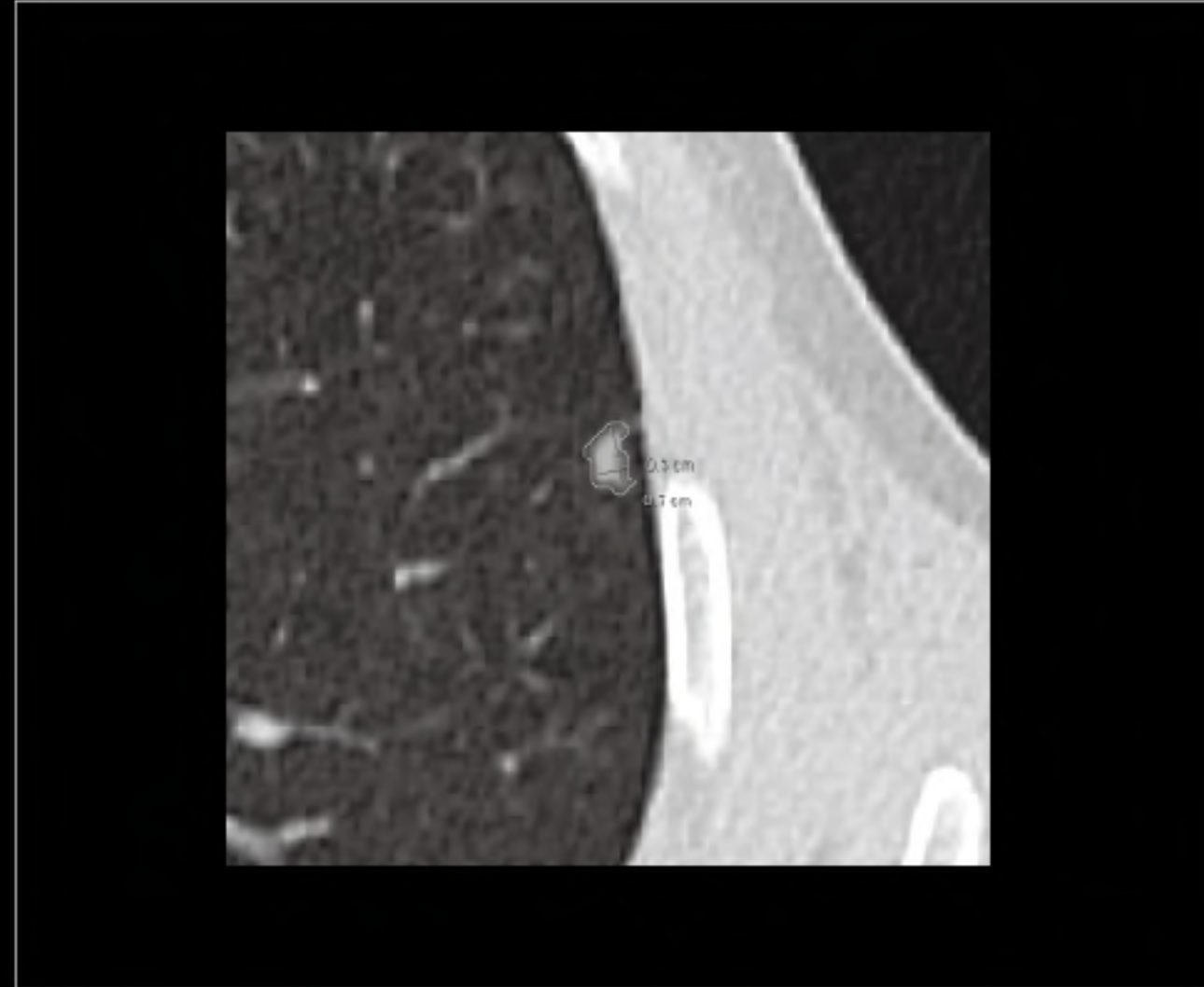
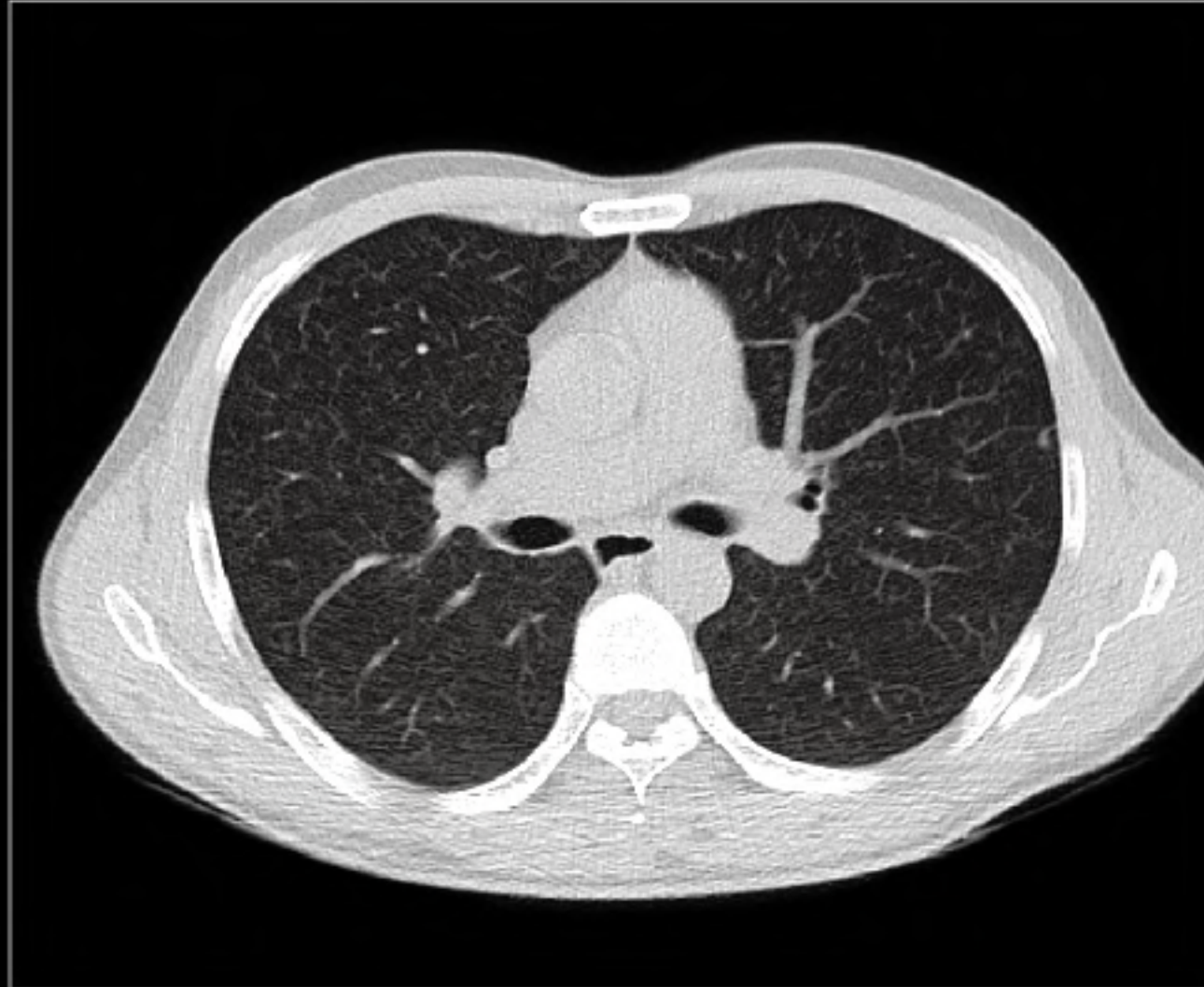
Clinical Images



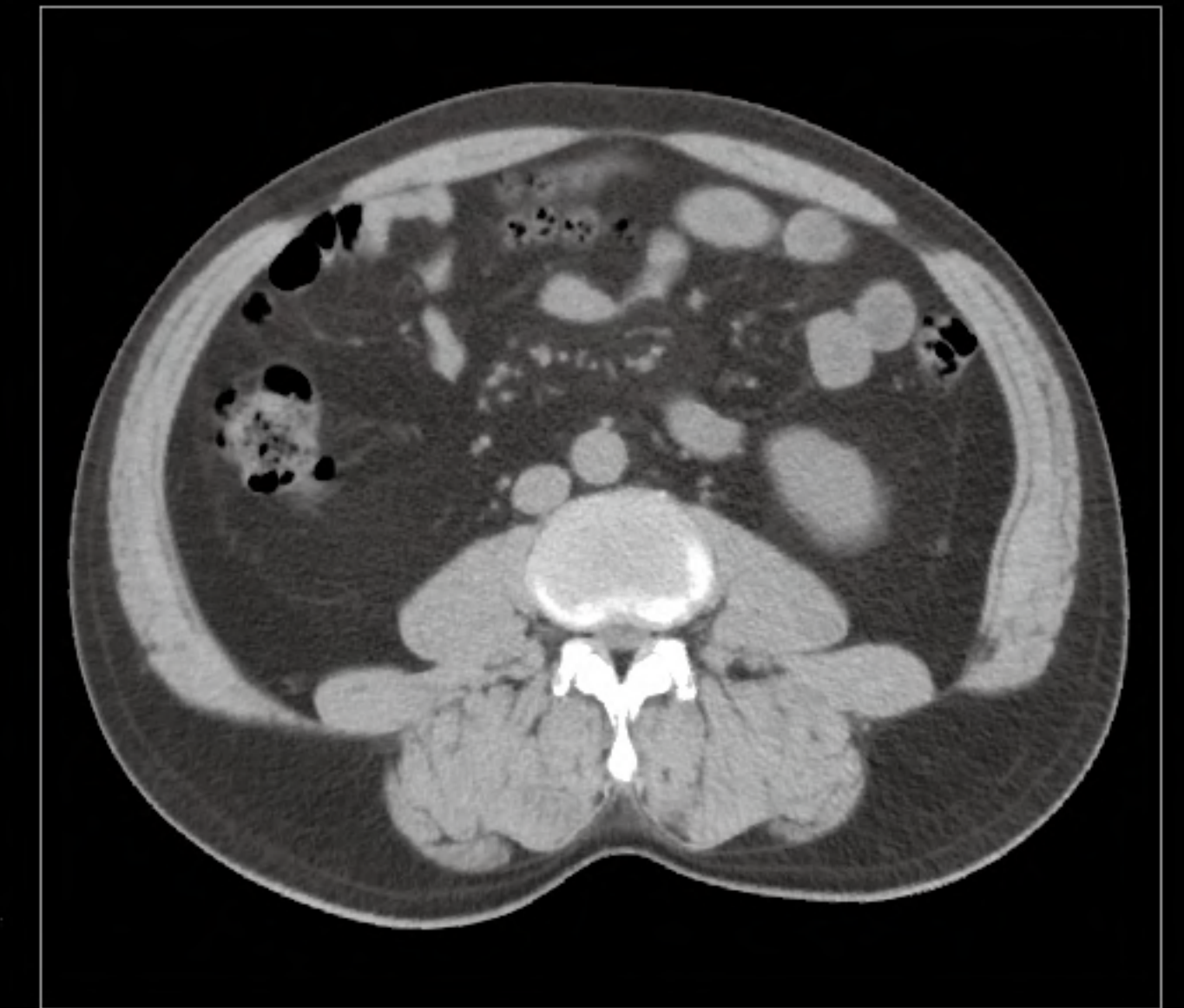
The innovative design of Z-detector effectively reduces partial volume effect and suppresses basis cranii artifacts. The image noise is reduced while the grey/white matter differentiation is enhanced.



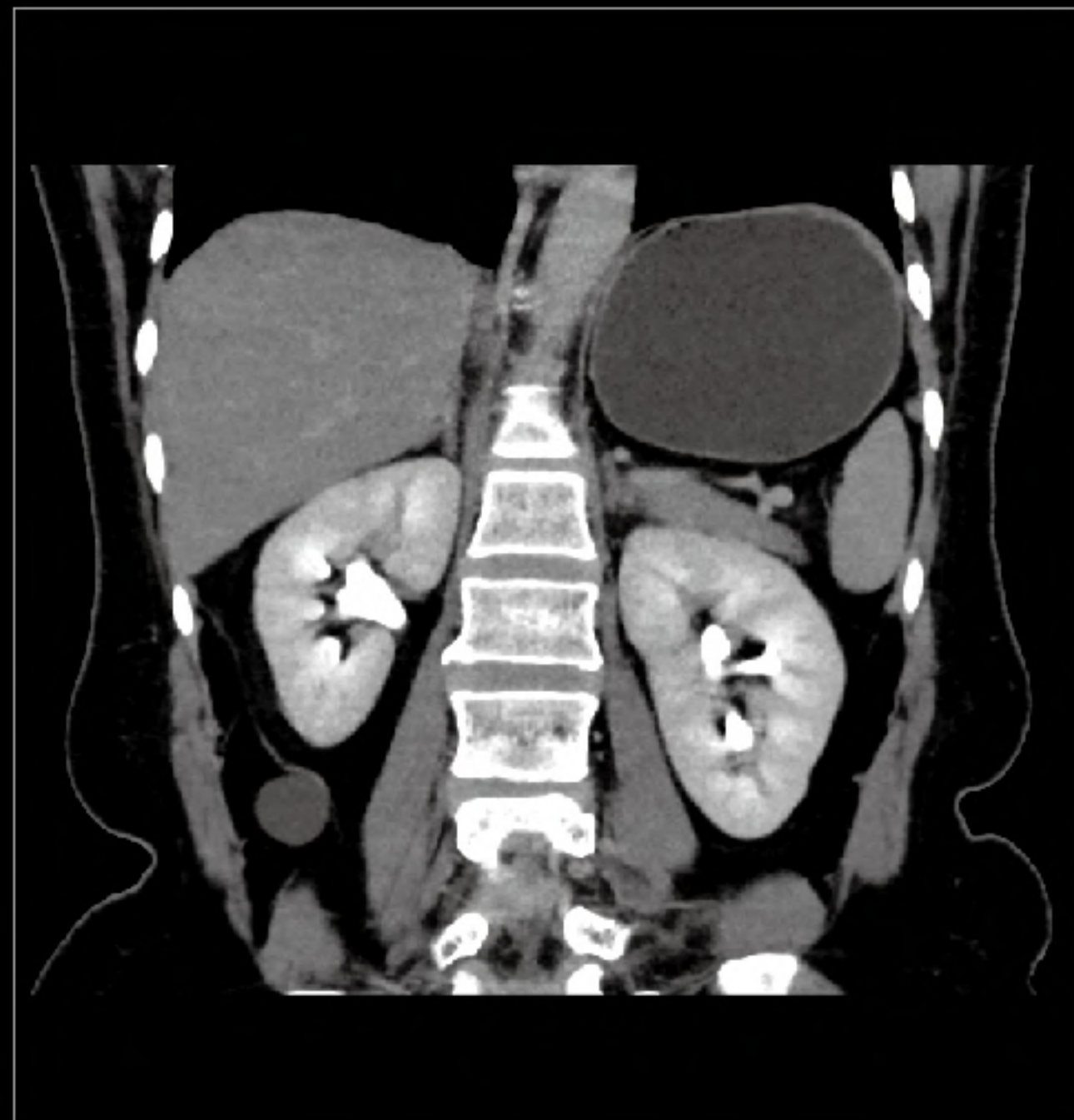
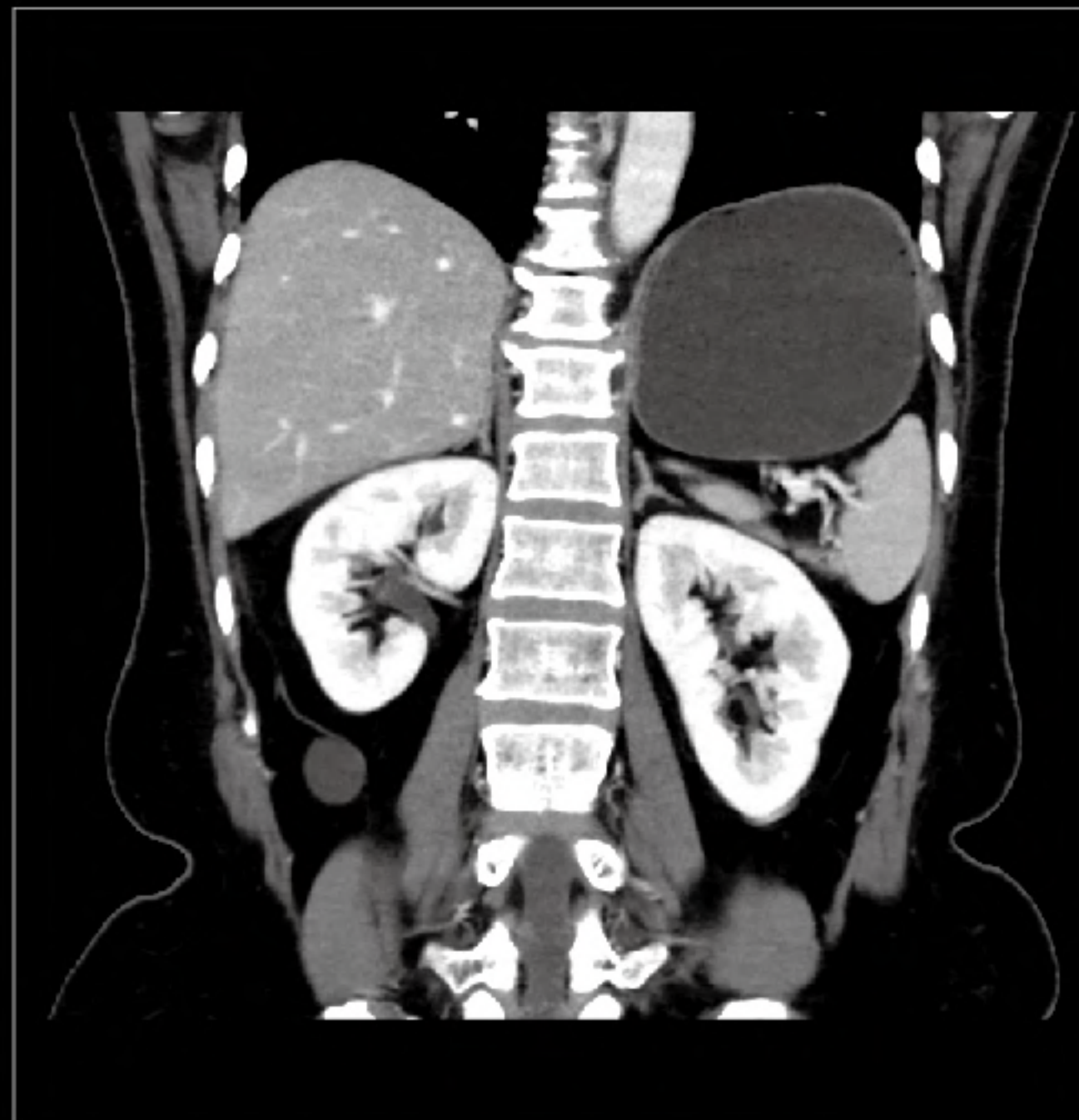
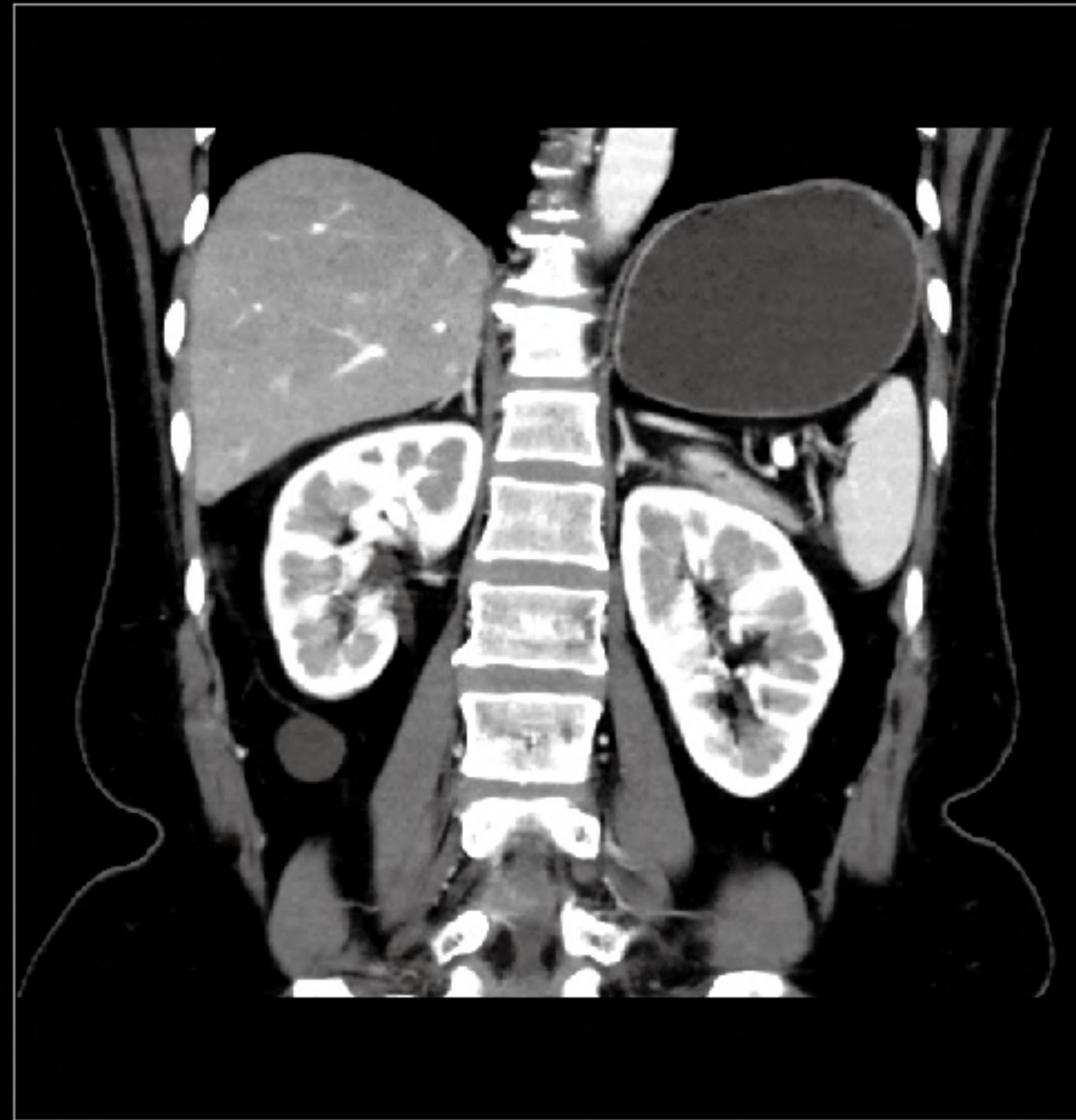
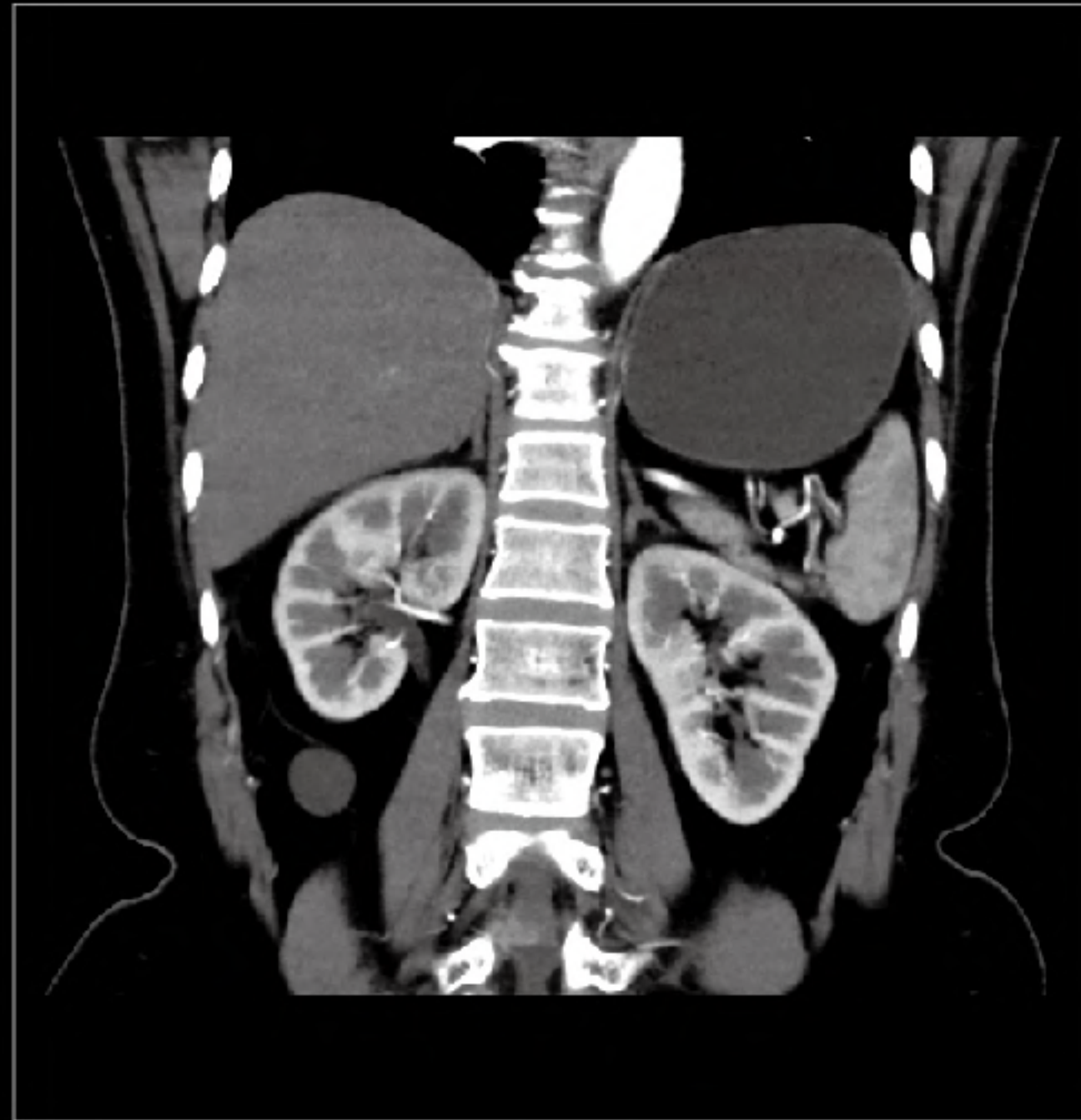
20lp/cm system spatial resolution unveils fine details of the ossicle and inner ear.



The low-dose protocol dedicated to lung cancer screening enables 3mm lesion to be spotted.
70kV, 38mAs, CTDIvol: 0.82mGy, ED: 0.38mSv.



The ultra-low noise design of Z-Detector substantially suppresses image noise and clearly shows the lesion.
Abdominal exam for patient with BMI 31.4.



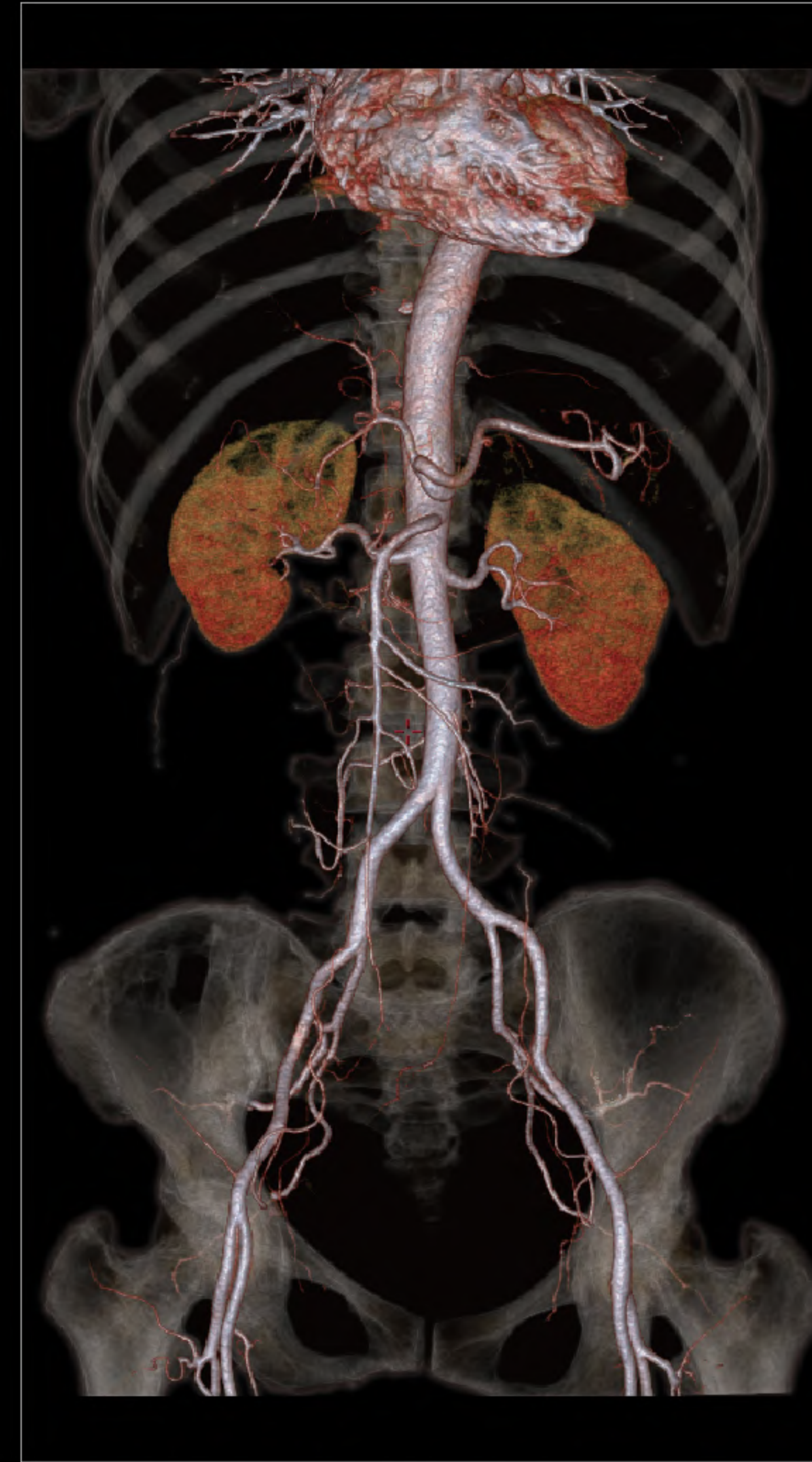
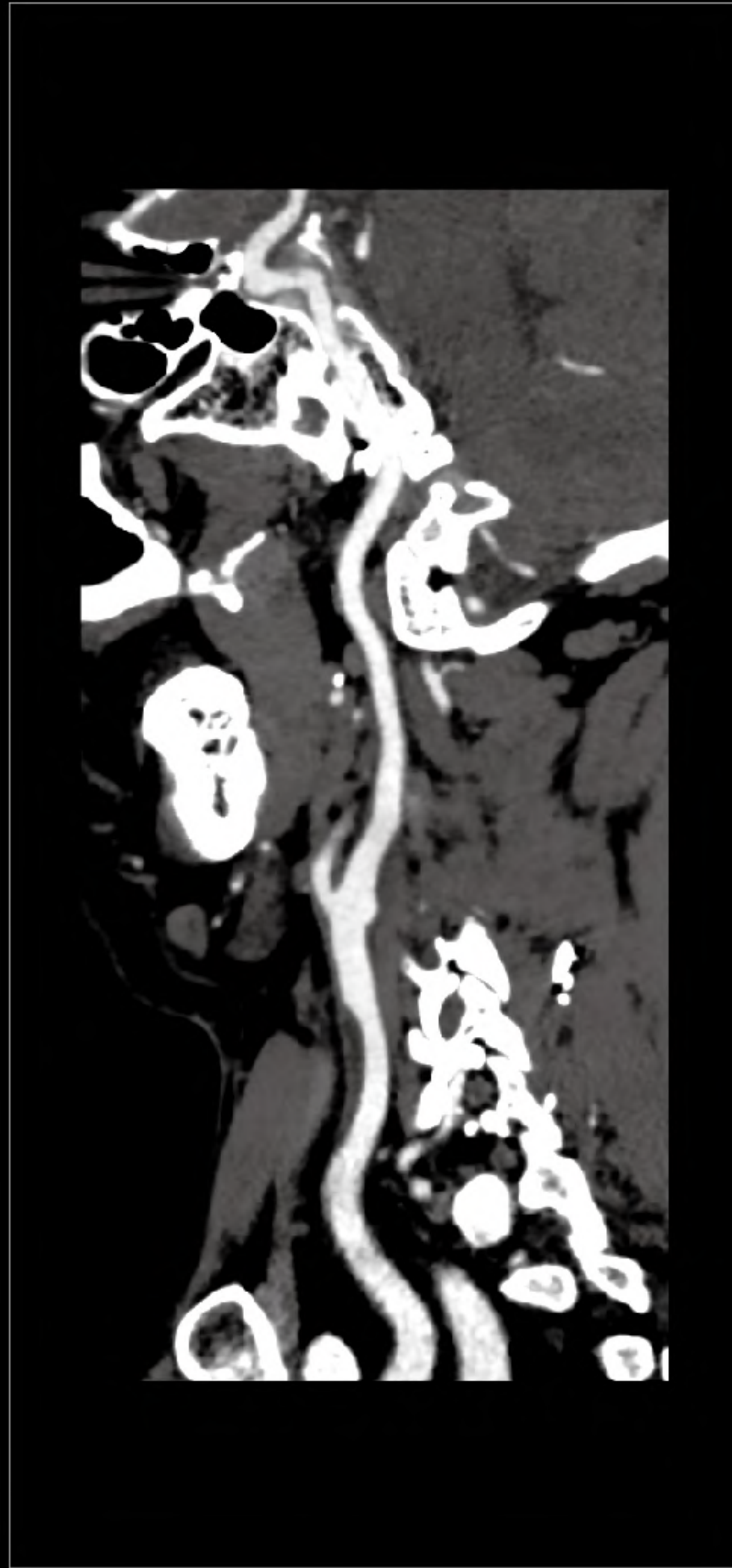
The powerful tube handles multi-phase contrast scans with ease. Lesion shape, location and enhancement exquisitely displayed.



20lp/cm spatial resolution enables sharp visualization of cortical and trabecular bone. Osteoporosis with minor bone absorption in the first metatarsophalangeal joint.



Clear view of carotid stenosis and soft plaque.
100kV, 160mAs, CTDIvol: 7.8mGy, ED: 0.36mSv.

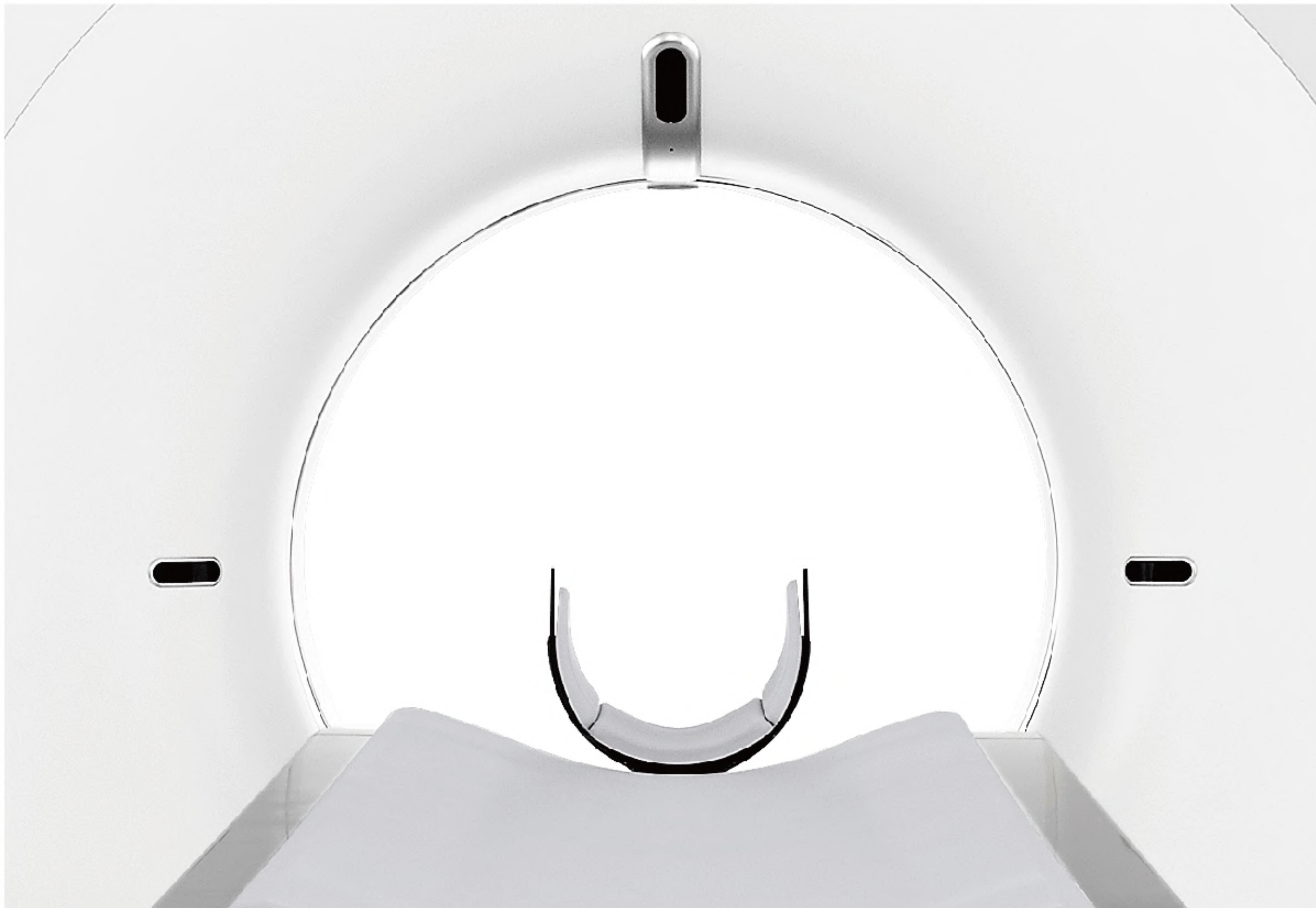


The powerful imaging chain helps to ensure the capability of continuous large-range scans.
10.5s scan time per phase, consecutive CTA+CTV+CTU.



"User in Mind" Design

Focusing on user experience, uCT 530 combines precise operation with a lightweight and artistic design. We bring aesthetic enjoyment and ease of use to the technology, delivering care, trust and respect through our design.



Aesthetic Pleasure

Our design scheme integrates eastern aesthetics with minimalism, presenting a seamless fusion of traditional and modern styling.

User-friendly Design

Our product design ultimately aims to deliver comfort, safety, efficiency, and ease-of-use. By applying ergonomic principles, we combine innovative design with perfect functionality in order to provide the best possible user experience, optimizing patient comfort during every examination.

Sophisticated Craftsmanship

Driven by the tenets of lightweight and precision design, we fine-tune every technological detail to embody the spirit of craftsmanship in every product.

ABOUT UIH

Shanghai United Imaging Healthcare Co., Ltd. is a provider of high-end medical equipment and medical IT solutions. From our headquarters in Shanghai's Jiading district to our network of research and development centers throughout the world, our global mission is to provide medical institutions with a full-range of healthcare solutions, from diagnostic imaging and radiation therapy equipment to service, training, and medical IT. We are dedicated to expanding access to high-quality medical care and improving the value of our services.

With a passion for change and independent innovation, we always aim to meet your needs. Perceive More. Provide More. Access More. We Have A Passion for Change.

